



## Birchwood

Birkenholz

Bouleau

Berken

Every wooden part delivered by Antiqua including tables and seating are produced in birch.

Birch has a long history, for instance it was used for adzes, rims and flails. In many cases it is also used in the wagon and aircraft construction industry. Nowadays it is often used as material for wood turners. Birch is even used by the production of musical instruments for instance pianos and guitars.

The benefit of birch against other wood species is the structure of it. Thereby it is superbly suitable for high grade furniture. Birch is a tough and strong wood. Therefore it is perfect for fabrication of tables and seating.

Wie alle Holzbauteile von Antiqua werden auch die Tische und Bänke aus dem traditionellen Möbelholz Birke gefertigt.

In früherer Zeit wurde Birkenholz sehr vielseitig eingesetzt. Als Wagnerholz verwendete man es für Deichseln, Felgen, Speichen oder Dreschklöppel. Vielfach wurde es auch im Waggon- und Flugzeugbau verwendet. Heutzutage ist Birkenholz ein geschätztes Drechslerholz. Ja sogar im Musikinstrumentenbau wird es z.B. für Gitarren und Klaviere verarbeitet. Eine große Bedeutung auch aufgrund der schönen Maserung hat Birkenholz heute bei der Herstellung hochwertiger Möbel.

Und da es sich um ein hartes und festes Holz handelt, ist Birke natürlich prädestiniert für Tische und Bänke.

L'ensemble de la gamme Bois et déclinée en bouleau.

Ce bois extrait jadis dans la fabrication des roues, des attelages, d'instruments de musique (guitare, pianos etc...).

L'avantage du bouleau par rapport aux autres essences de bois réside dans structure même.

Ce bois est tout à fait adapté aux meubles de standing.

Sa robustesse le destine naturellement à la fabrication de table et de chaises.

De door Antiqua geleverde houten onderdelen alsmede tafels en banken zijn uit berkenhout geproduceerd.

Berkenhout heeft een lange geschiedenis, het werd bijvoorbeeld gebruikt voor dissels, velgen en dorsvlegels. Dikwijls ook toegepast in de wagon- en vliegtuigindustrie. Heden ten dage wordt berkenhout veelvuldig ingezet als draaihout. Het wordt zelfs ingezet bij de bouw van muziekinstrumenten zoals bij de bouw van gitaren en vleugels.

De grote waarde van het berkenhout zit in de structuur van het hout, waardoor het uitstekend geschikt is voor hoogwaardige meubels.

Omdat berkenhout een compacte en harde houtsoort is, is het een voorraanstaand materiaal ten behoeve van de productie van tafels en banken.



**Table base:** Solid birch

**Table top:** Birchwood Multiplex (solid birch on request)

**Table top thickness:** 36 mm

*Tischgestell:* Birke massiv

*Tischplatte:* Birke Multiplex (Birke massiv auf Anfrage)

*Tischplattenstärke:* 36 mm

*Pied de table:* Bouleau massif

*Plateau:* Bouleau Multiplex (bouleau massif sur demande)

*Epaisseur plateau:* 36 mm

*Tafelonderstel:* Massief berken

*Blad:* Berken Multiplex (massief berken op aanvraag)

*Bladdikte:* 36 mm

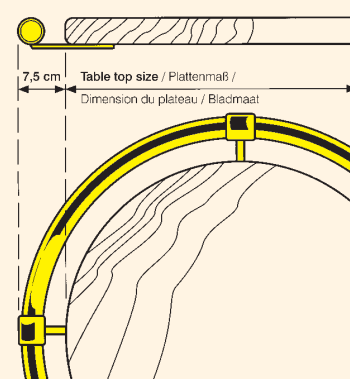


All drinkstand tables are supplied with a footrail. As an option we can also supply a handrail in the same material.

Alle Stehtische werden in der Grundausstattung mit einem Fußlauf geliefert. Zusätzlich ist auch ein Handlauf im gleichen Material möglich.

Tous les mange-debout sont livrés avec une barre repose-pieds. Sur demande, une main-courante peut être rajoutée.

Alle statafels worden standaard geleverd met een voetreling. Een bijpassende handreling behoort tot een van de opties.





Art.Nr. 50.8000.080.40  
H 80 cm



High desk / Stehpult / Pupitre / Lessenaar  
Art.Nr. 50.6360.125.40  
H 125 cm

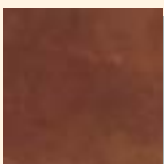


Easel / Staffelei / Chevalet / Ezel  
Art.Nr. 50.6400.150.40  
H 150 cm

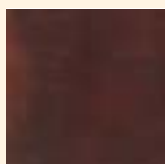


Art.Nr. 50.8020.080.40  
H 80 cm

Stain colours / Beiztöne / Couleurs / Beitskleuren



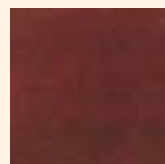
P 10



P 11



P 21



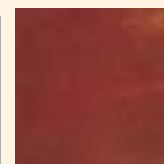
P 36



P 37



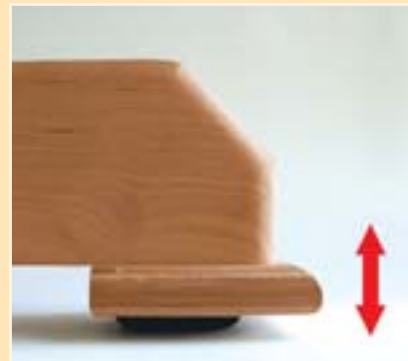
P 43



KB 7



nature



There's an end of beer mats!

Every table in the series „Sir“, „Art“, „Classic“ and „Quadro“ as well as drinkstand tables in the series „Bistro“ are mounted with adjustable feet. By mounting these adjustable feet you have the advantage to set the table without wobbling.

Schluss mit unterlegten Bierdeckeln!

Alle Tische der Serien „Sir“, „Art“, „Classic“ und „Quadro“ sowie die Stehtische der Serie „Bistro“ sind in jedem Fuß mit einer Niveauregulierung ausgestattet. So können Unebenheiten im Fußboden problemlos ausgeglichen werden und das lästige Wackeln der Tische hat ein Ende.

Plus de tables bancales.

Tous les manges-debout et tables des séries „Sir“, „Art“, „Classic“ et „Quadro“ et les manges-debout de la série „Bistro“ sont équipés d'un système de réglage de niveau.

Weg met die bierviltjes!

Alle tafels uit de serie „Sir“, „Art“, „Classic“ en „Quadro“ en de statafels uit de serie „Bistro“ zijn uitgevoerd met stelvoeten. Door middel van deze stelvoeten is het zeer eenvoudig de tafels zonder wiebelen te plaatsen.

## „Special model“



H 112 cm, 80 x 80 cm  
Art.Nr. 52.9000.808...



H 112 cm, 80 x 80 cm  
Art.Nr. 52.9001.808...

**Foot- and handrails**  
Fuß- und Handläufe  
Repose-pieds et main-courantes  
Voet- en handrelings



**Polished brass**  
Messing poliert  
Laiton poli  
Messing gepolijst

**Art.Nr.**

52. .... .10



**Brass antique**  
Messing antik  
Laiton vieilli  
Messing antiek

**Art.Nr.**

52. .... .13

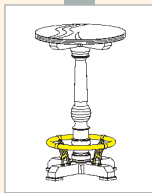


**Satined stainless steel**  
Edelstahl gebürstet  
Inox brossé  
RVS geborsteld

**Art.Nr.**

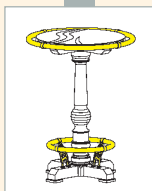
52. .... .12

# „Sir“



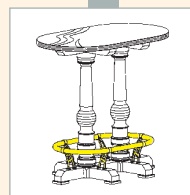
H 112 cm

Ø 60 cm 52.1000.060...  
 Ø 70 cm 52.1000.070...  
 Ø 80 cm 52.1000.080...



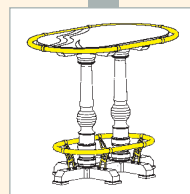
H 112 cm

Ø 60 cm 52.1001.060...  
 Ø 70 cm 52.1001.070...  
 Ø 80 cm 52.1001.080...



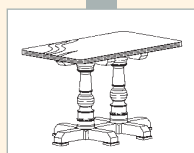
H 112 cm

120 x 70 cm 52.1300.127...



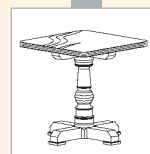
H 112 cm

120 x 70 cm 52.1301.127...



H 75 cm

120 x 70 cm 52.1500.127.40  
 120 x 80 cm 52.1500.128.40  
 140 x 70 cm 52.1500.147.40  
 140 x 80 cm 52.1500.148.40  
 180 x 70 cm 52.1500.187.40  
 180 x 80 cm 52.1500.188.40



H 75 cm

70 x 70 cm 52.1400.707.40  
 80 x 80 cm 52.1400.808.40



H 75 cm

Ø 70 cm 52.1400.070.40  
 Ø 80 cm 52.1400.080.40

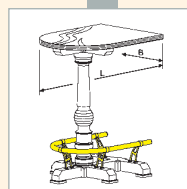


Wall protection / Wandschutz /  
Protection murale / Smetplaat  
B 71 cm

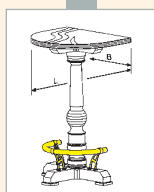
52.9610.070.40



H 112 cm

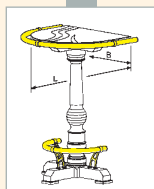


L x B  
90 x 70 cm 52.1200.907...  
120 x 70 cm 52.1200.127...



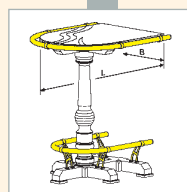
H 112 cm

L x B  
60 x 70 cm 52.1100.607...



H 112 cm

L x B  
60 x 70 cm 52.1101.607...



H 112 cm

L x B  
90 x 70 cm 52.1201.907...  
120 x 70 cm 52.1201.127...

Foot- and handrails / Fuß- und Handläufe /  
Repose-pieds et main-courantes / Voet- en handelings



Art.Nr.

52. .... .10



Art.Nr.

52. .... .13



Art.Nr.

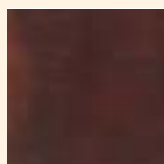
52. .... .12



Stain colours / Beiztöne / Couleurs / Beitskleuren



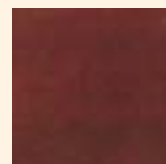
P 10



P 11



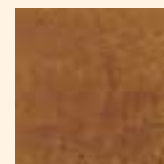
P 21



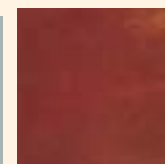
P 36



P 37



P 43

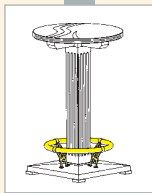


KB 7



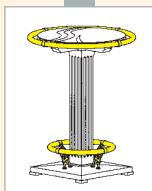
nature

# „Art“



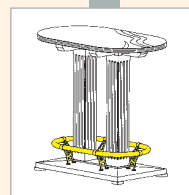
H 112 cm

Ø 60 cm 52.2000.060...  
 Ø 70 cm 52.2000.070...  
 Ø 80 cm 52.2000.080...



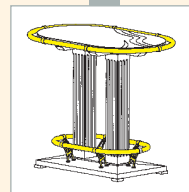
H 112 cm

Ø 60 cm 52.2001.060...  
 Ø 70 cm 52.2001.070...  
 Ø 80 cm 52.2001.080...



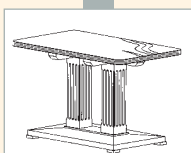
H 112 cm

120 x 70 cm 52.2300.127...



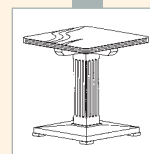
H 112 cm

120 x 70 cm 52.2301.127...



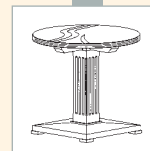
H 75 cm

120 x 70 cm 52.2500.127.40  
 120 x 80 cm 52.2500.128.40  
 140 x 70 cm 52.2500.147.40  
 140 x 80 cm 52.2500.148.40  
 180 x 70 cm 52.2500.187.40  
 180 x 80 cm 52.2500.188.40



H 75 cm

70 x 70 cm 52.2400.707.40  
 80 x 80 cm 52.2400.808.40



H 75 cm

Ø 70 cm 52.2400.070.40  
 Ø 80 cm 52.2400.080.40

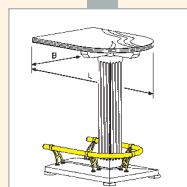


**Wall protection** / Wandschutz /  
Protection murale / Smetplaat  
B 71 cm

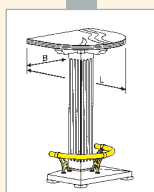
52.9610.070.40



H 112 cm

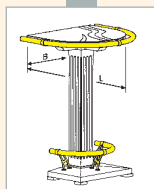


L x B  
90 x 70 cm 52.2200.907...  
120 x 70 cm 52.2200.127...



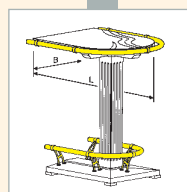
H 112 cm

L x B  
60 x 70 cm 52.2100.607...



H 112 cm

L x B  
60 x 70 cm 52.2101.607...



H 112 cm

L x B  
90 x 70 cm 52.2201.907...  
120 x 70 cm 52.2201.127...

**Foot- and handrails** / Fuß- und Handläufe /  
Repose-pieds et main-courantes / Voet- en handrelings



Art.Nr.

52. .... .10



Art.Nr.

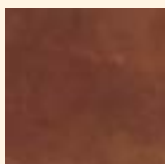
52. .... .13



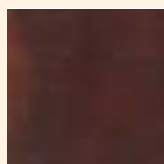
Art.Nr.

52. .... .12

**Stain colours** / Beiztöne / Couleurs / Beitskleuren



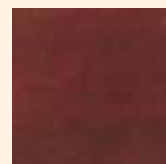
P 10



P 11



P 21



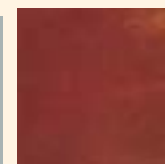
P 36



P 37



P 43

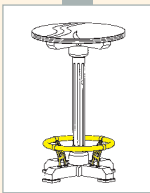


KB 7



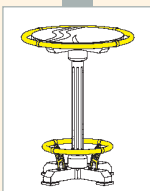
nature

# „Classic“



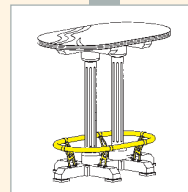
H 112 cm

Ø 60 cm 52.5000.060...  
 Ø 70 cm 52.5000.070...  
 Ø 80 cm 52.5000.080...



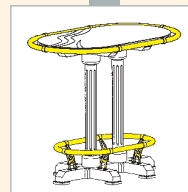
H 112 cm

Ø 60 cm 52.5001.060...  
 Ø 70 cm 52.5001.070...  
 Ø 80 cm 52.5001.080...



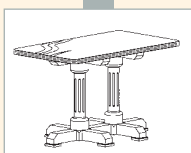
H 112 cm

120 x 70 cm 52.5300.127...



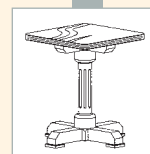
H 112 cm

120 x 70 cm 52.5301.127...



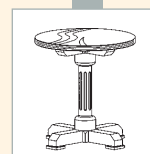
H 75 cm

120 x 70 cm 52.5500.127.40  
 120 x 80 cm 52.5500.128.40  
 140 x 70 cm 52.5500.147.40  
 140 x 80 cm 52.5500.148.40  
 180 x 70 cm 52.5500.187.40  
 180 x 80 cm 52.5500.188.40



H 75 cm

70 x 70 cm 52.5400.707.40  
 80 x 80 cm 52.5400.808.40



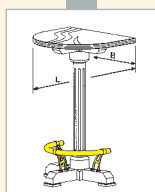
H 75 cm

Ø 70 cm 52.5400.070.40  
 Ø 80 cm 52.5400.080.40



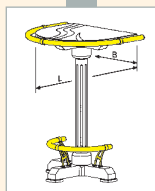
Wall protection / Wandschutz /  
Protection murale / Smetplaat  
B 71 cm

52.9610.070.40



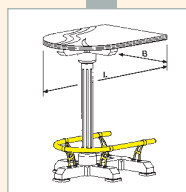
H 112 cm

L x B  
60 x 70 cm 52.5100.607...



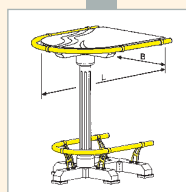
H 112 cm

L x B  
60 x 70 cm 52.5101.607...



H 112 cm

L x B  
90 x 70 cm 52.5200.907...  
120 x 70 cm 52.5200.127...



H 112 cm

L x B  
90 x 70 cm 52.5201.907...  
120 x 70 cm 52.5201.127...

Foot- and handrails / Fuß- und Handläufe /  
Repose-pieds et main-courantes / Voet- en handelings



Art.Nr.

52. .... .10



Art.Nr.

52. .... .13

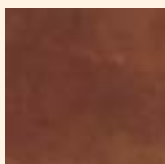


Art.Nr.

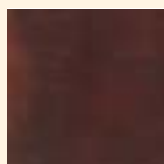
52. .... .12



Stain colours / Beiztöne / Couleurs / Beitskleuren



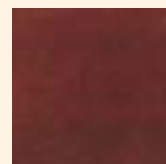
P 10



P 11



P 21



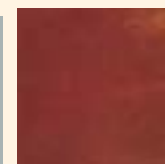
P 36



P 37



P 43



KB 7



nature

# „Bistro“



Ø 75 cm, H 112 cm  
Art.Nr. 52.1700.075.40



L 50 cm, B 70 cm, H 112 cm  
Art.Nr. 52.1720.507.40



Wall protection / Wandschutz /  
Protection murale / Smetplaat  
B 71 cm

Art.Nr. 52.9610.070.40



L 60 cm, B 70 cm  
Art.Nr. 52.9600.607.40



L 30 cm, B 70 cm  
Art.Nr. 52.9600.307.40



120 x 70 cm, H 76 cm,  
□ 30 mm  
Art.Nr. 52.9500.127.40



70 x 70 cm, H 76 cm,  
□ 30 mm  
Art.Nr. 52.9400.707.40



L 70 cm, B 90 cm, H 112 cm  
Art.Nr. 52.1730.907.40



120 x 70 cm, H 112 cm  
Art.Nr. 52.1710.127.40



80 x 80 cm, H 76 cm  
Art.Nr. 52.9550.808.40



120 x 80 cm, H 76 cm  
Art.Nr. 52.9550.128.40



Ø 100 cm, H 76 cm  
Art.Nr. 52.9550.100.40

Stain colours / Beiztöne / Couleurs / Beitskleuren



P 10

P 11

P 21

P 36

P 37

P 43

KB 7

nature

# „Brasserie“



**Model A**

H 76 cm

70 x 70 cm  
Art.Nr. 52.0300.707.40

80 x 80 cm  
Art.Nr. 52.0300.808.40



120 x 70 cm Art.Nr. 52.0300.127.40  
140 x 70 cm Art.Nr. 52.0300.147.40  
180 x 70 cm Art.Nr. 52.0300.187.40

120 x 80 cm Art.Nr. 52.0300.128.40  
140 x 80 cm Art.Nr. 52.0300.148.40  
180 x 80 cm Art.Nr. 52.0300.188.40



**Model B**

H 76 cm

70 x 70 cm  
Art.Nr. 52.0500.707.40

80 x 80 cm  
Art.Nr. 52.0500.808.40



120 x 70 cm Art.Nr. 52.0500.127.40  
140 x 70 cm Art.Nr. 52.0500.147.40  
180 x 70 cm Art.Nr. 52.0500.187.40

120 x 80 cm Art.Nr. 52.0500.128.40  
140 x 80 cm Art.Nr. 52.0500.148.40  
180 x 80 cm Art.Nr. 52.0500.188.40



**Model C**

H 76 cm

70 x 70 cm  
Art.Nr. 52.0600.707.40

80 x 80 cm  
Art.Nr. 52.0600.808.40



120 x 70 cm Art.Nr. 52.0600.127.40  
140 x 70 cm Art.Nr. 52.0600.147.40  
180 x 70 cm Art.Nr. 52.0600.187.40

120 x 80 cm Art.Nr. 52.0600.128.40  
140 x 80 cm Art.Nr. 52.0600.148.40  
180 x 80 cm Art.Nr. 52.0600.188.40

60 x 70 cm Art.Nr. 52.0700.607.40  
60 x 80 cm Art.Nr. 52.0700.608.40

120 x 70 cm Art.Nr. 52.0700.127.40  
120 x 80 cm Art.Nr. 52.0700.128.40

# „Quadro“



70 x 70 cm, H 112 cm  
Art.Nr. 52.7000.707...



120 x 70 cm, H 112 cm  
Art.Nr. 52.7300.127...

Footrails / Fußläufe / Repose-pieds / Voetrelings



Art.Nr.  
52. .... .10



Art.Nr.  
52. .... .13



Art.Nr.  
52. .... .12



120 x 70 cm, H 75 cm  
Art.Nr. 52.7500.127.40

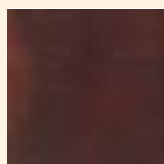


70 x 70 cm, H 75 cm  
Art.Nr. 52.7400.707.40

Stain colours / Beiztöne / Couleurs / Beitskleuren



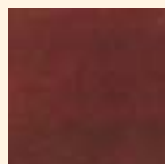
P 10



P 11



P 21



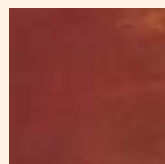
P 36



P 37



P 43



KB 7



nature



H 91,5, B 139, T 57,5 cm  
**Art.Nr. 50.7450.139.40**  
 (without upholstery / ohne Polsterung /  
 sans rembourrage / zonder stoffering)



H 126,5, B 139, T 57,5 cm  
**Art.Nr. 50.7250.139.40**  
 (without upholstery / ohne Polsterung /  
 sans rembourrage / zonder stoffering)



H 91,5, B 139, T 61 cm  
**Art.Nr. 50.7350.139.40**

**Seat benches also assembled to order.**

Bankanlagen auch nach Ihren Maßen möglich.

Banquette réalisable sur mesure.

Banken ook in andere afmetingen te verkrijgen.



H 126,5, B 139, T 61 cm  
**Art.Nr. 50.7150.139.40**



**Divider / Raumtrenner / Séparateur / Scheidingswand**  
 (without seat bench / ohne Bank /  
 sans banquette / zonder zitbank)  
 H 180, B 141, T 11 cm

**with Tiffany glass / mit Tiffany-Scheibe /  
 avec Tiffany vitraux / met Tiffany paneel**  
**Art.Nr. 50.7700.141.40**

**with mirror / mit Spiegel /  
 avec miroir / met spiegel**  
**Art.Nr. 50.7800.141.40**

**with wood panel / mit Holzpaneel /  
 avec panneau bois / met hout paneel**  
**Art.Nr. 50.7900.141.40**

**Leatherette upholstery / Kunstleder-Polsterung /  
 Similicuir rembourrage / Kunstleer stoffering**



**A**

**Seat**  
 Sitzfläche  
 Assise  
 Zitting

**Art.Nr. 50.7610.100...**

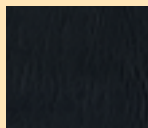


**B**

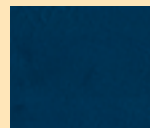
**Seat and back**  
 Sitzfläche und Rückenlehne  
 Assise et dossier  
 Zitting en rugleuning

**Art.Nr. 50.7620.100...**

**Colours / Farben / Couleurs / Kleuren**



**Art.Nr.**  
 50.76 \_\_,100.01



**Art.Nr.**  
 50.76 \_\_,100.02



**Art.Nr.**  
 50.76 \_\_,100.03



**Art.Nr.**  
 50.76 \_\_,100.04

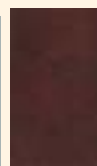


**Art.Nr.**  
 50.76 \_\_,100.05

**Stain colours / Beiztöne / Couleurs / Beitskleuren**



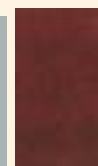
P 10



P 11



P 21



P 36



P 37



P 43



KB 7



nature